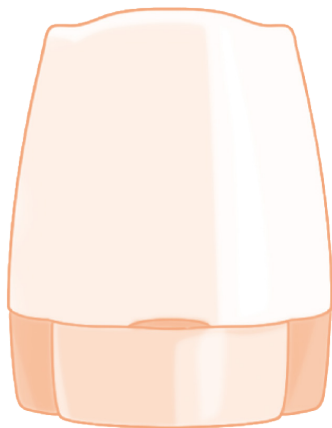


## Instructions on how to use Breezhaler®

### What is the Breezhaler® device?

It is a device adapted for inhaling the medicine contained in a transparent capsule that is previously placed inside and pierced. When inhaled through the inhaler's mouthpiece, the medicine reaches the lungs directly.



It makes an audible signal when inhaling and has a sweet taste. That means that the medicine has been properly taken.

It consists of a base and a hood. The base has a compartment for the capsule, a mouthpiece with a filter and a button. It should be cleaned once a week inside and outside with a clean, dry cloth to remove any powder remains. Do not wash it with water.

### How do you use the Breezhaler®?

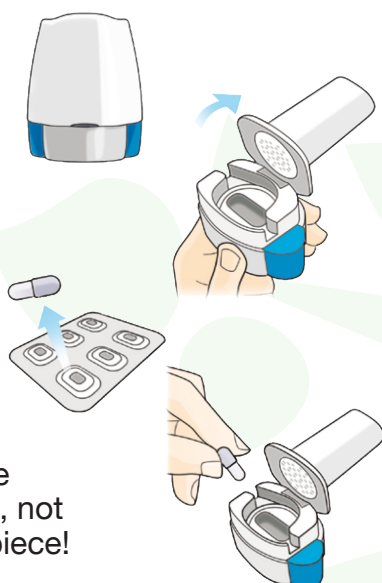
Either standing or sitting down, relax as much as you can and follow these instructions:

**1.** Remove the lid.

**2.** Hold the base of the inhaler firmly and tilt the mouthpiece.

**3.** With dry hands, remove a capsule from the blister.

**4.** Insert the capsule in the compartment, not through the mouthpiece!



**5 and 6.** Close the mouthpiece. Pierce the capsule by pressing the side buttons of the inhaler just once.



**7.** Breathe out fully (do not blow into the mouthpiece).



**8.** Close your lips around the mouthpiece and lift your head. Breathe in quickly and deeply through your mouth (without pressing the side buttons). The capsule will rotate inside the chamber and you will notice a buzzing sound



**9.** Hold your breath in your lungs for around 10 seconds, or for as long as you can.



**10.** Breathe out slowly.

**11.** Check that the cartridge is empty. If it isn't, repeat steps 7 to 10.



**12.** Gargle and rinse your mouth after each use.



If you have any questions, please check with the nurse